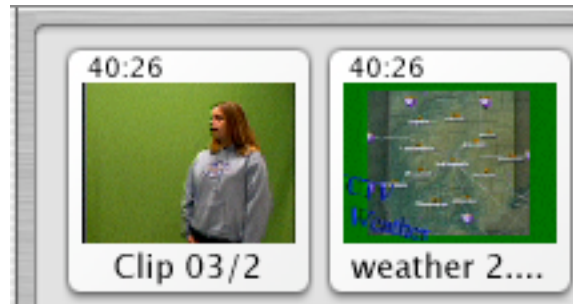
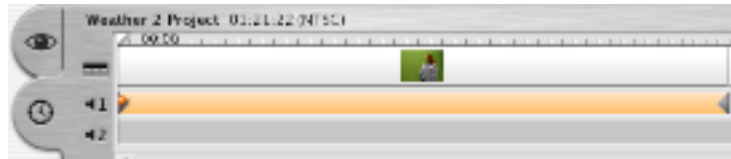


Instructions for Weather
Chroma Key with Green Screen

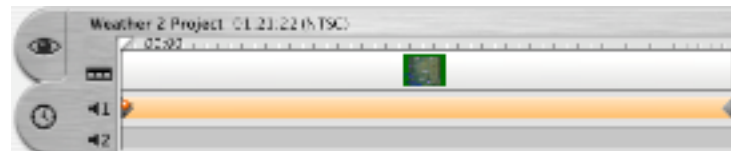
Step # 1 Get your two clips (weather person and animation) side by side in the shelf and trim them down to around the same length of time.



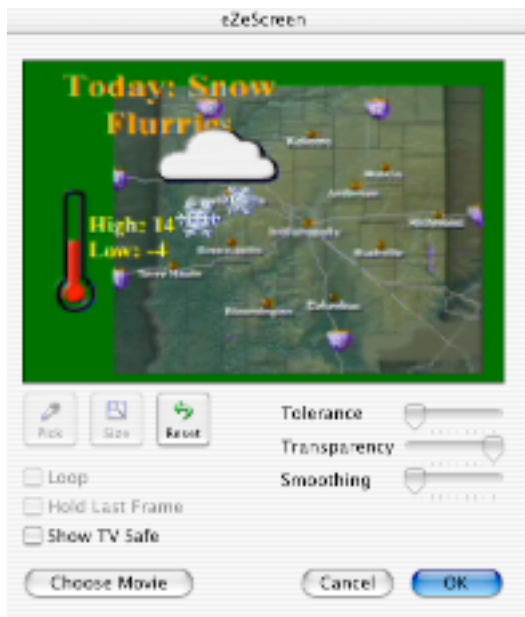
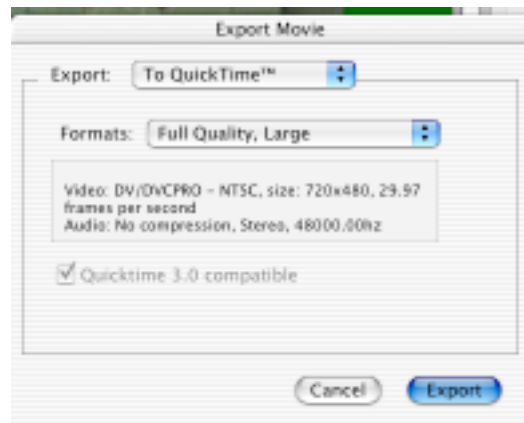
Step # 2 Drag the clip of the weather person down into the timeline and extract the audio.



Step # 3 Drag the clip of the weather person back up to the shelf and bring the animation into the timeline over the audio. (This where you can make sure the audio matches up with the weather animation)



Step # 4 Drag the weather animation back up to the shelf and bring the weather person back down. Go up to file and export as Quicktime (Full Quality). Make sure to save it somewhere easy to find.



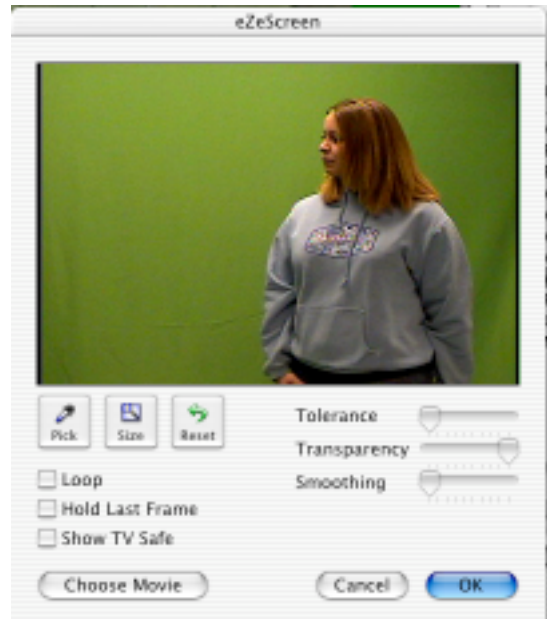
Step # 5 Drag the clip of the weather person back up to the shelf and bring the animation down. Make sure the weather animation clip is highlighted yellow.

Step # 6 Select the "Effects" button under the shelf. Choose eZeScreen in the list that appears. Click on the "Configure..." button. The window to the left will appear.

Step # 7 Click on the “Choose Movie” button. This is where you have to remember where and what you saved the movie of the weather person clip.

Step # 8 Press the Pick button and click somewhere in the green. You should see a few dots disappear. This takes some experimentation to try to get rid of as many dots as possible.

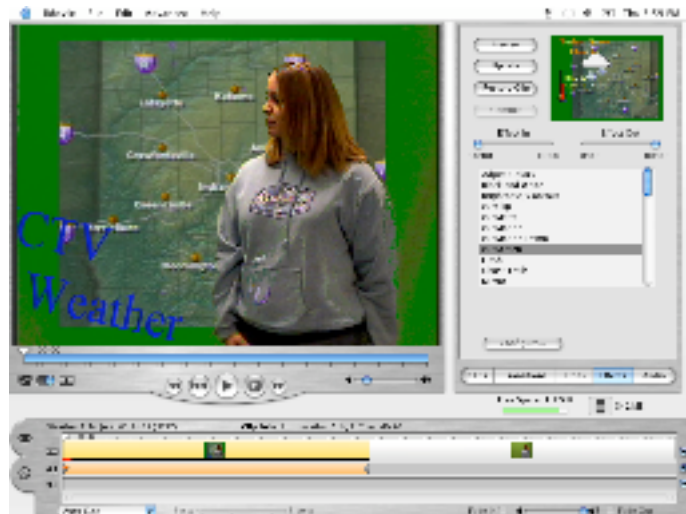
Step # 9 This is where you have to experiment with the Tolerance, Transparency, and Smoothing slider tools. The idea is to get rid of as much of the green as possible.



Step # 10 Once you have clicked the “OK” button, you won’t see anything different until you press the “Preview” button. This will show you a section of the composited video play together. You may have to go back and arrange the settings some more if you can see through your anchor or if there is too much green haze.

Step # 11 It is not until you click the “Apply” button and the red line begins to crawl across the clip in the timeline that the effect actually generates.

Step # 12 Once the red line runs across the clip, you should play the whole clip to make sure it looks natural and there are no obvious places in which you can see through the person.



Step # 13 If you need to adjust the settings more, you will have to go to the edit menu and select “Undo”. You will then need to go back to step # 6 on this sheet. You will not have to repeat step # 7 as the plug-in will remember which movie it was it had last.